



Rewarding Learning

General Certificate of Secondary Education
2025

Centre Number

--	--	--	--	--

Candidate Number

--	--	--	--	--

Technology and Design

Unit 2

Option A:

Electronic and Microelectronic
Control Systems



[GTY21]

GTY21

WEDNESDAY 11 JUNE, MORNING

TIME

1 hour 30 minutes.

INSTRUCTIONS TO CANDIDATES

Write your Centre Number and Candidate Number in the spaces provided at the top of this page.

You must answer the questions in the spaces provided.

Do not write outside the boxed area on each page or on blank pages.

Questions which require drawing or sketching should be completed using an HB pencil.

All other questions must be completed using black ink only.

Do not write in pencil or with a gel pen.

Answer **both** questions.

INFORMATION FOR CANDIDATES

The total mark for this paper is 100.

Quality of written communication will be assessed in Question **1(d)**.

Figures in brackets printed down the right-hand side of pages indicate the marks awarded to each question or part question.

The Formula sheet is on page 3.

14800



20GTY2101

BLANK PAGE
DO NOT WRITE ON THIS PAGE
(Questions start on page 4)

14800



20GTY2102

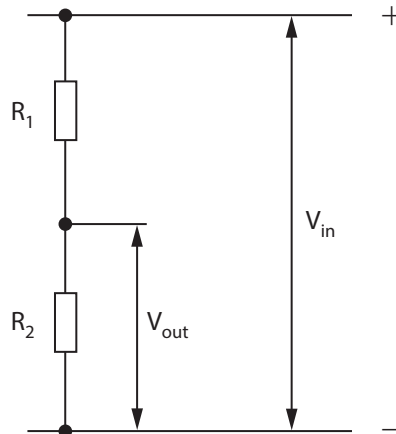


Formulae for GCSE Technology and Design

You should use, where appropriate, the formulae given below when answering questions which include calculations.

1 Potential Difference = current \times resistance ($V = I \times R$)

2 For potential divider $V_{\text{out}} = \frac{R_2}{(R_1 + R_2)} \times V_{\text{in}}$



3 Series Resistors $R_t = R_1 + R_2 + \dots + R_n$

4 Parallel Resistors $\frac{1}{R_t} = \frac{1}{R_1} + \frac{1}{R_2}$ or $R_t = \frac{R_1 \times R_2}{R_1 + R_2}$

5 Time Constant $T = R \times C$

6 Period $T = \frac{1}{f}$

7 Frequency (Hz) $f = \frac{1.44}{(R_1 + 2R_2)C}$ for the output of an astable circuit using a 555 timer

8 Time $T = 1.1 \times C \times R$ for the output of a monostable circuit using a 555 timer

[Turn over



Answer **all** questions

1 Four electronic symbols, labelled **A**, **B**, **C** and **D** are shown in **Fig. 1**.

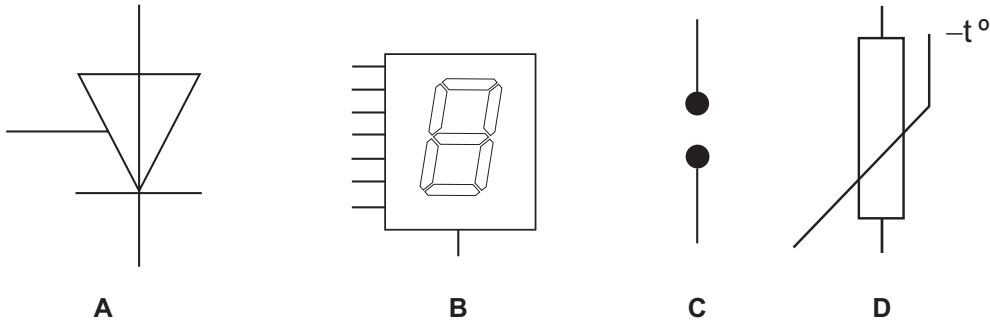


Fig. 1

Source: CCEA

(a) (i) Name the electronic component represented by each symbol shown in **Fig. 1** and state if it is an input, process or output component.

A _____

Input, process or output? _____ [2]

B _____

Input, process or output? _____ [2]

C _____

Input, process or output? _____ [2]

D _____

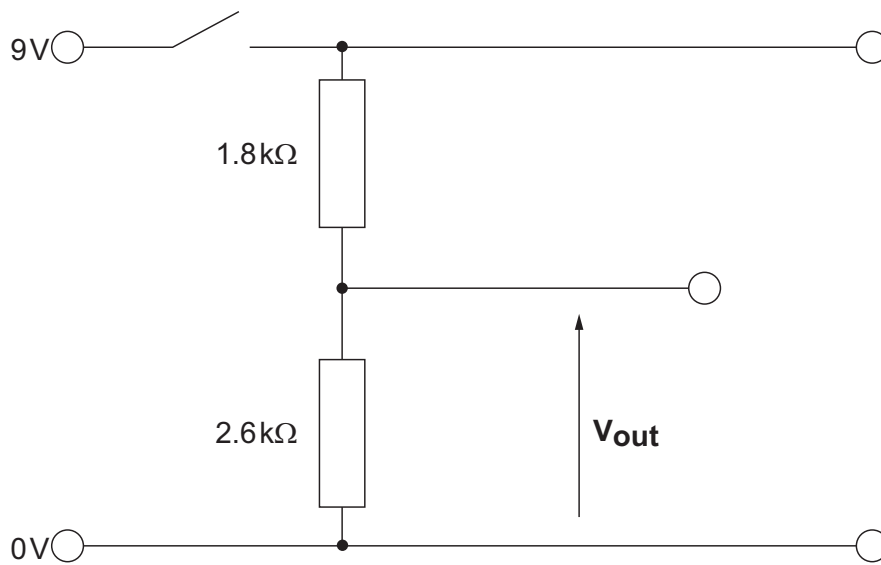
Input, process or output? _____ [2]

(ii) Explain the meaning of the term “feedback” when used in a control system.

_____ [2]



(b) Fig. 2 shows a potential divider circuit.



Source: CCEA

Fig. 2

- (i) Calculate the expected voltage output V_{out} , when the circuit is switched on.

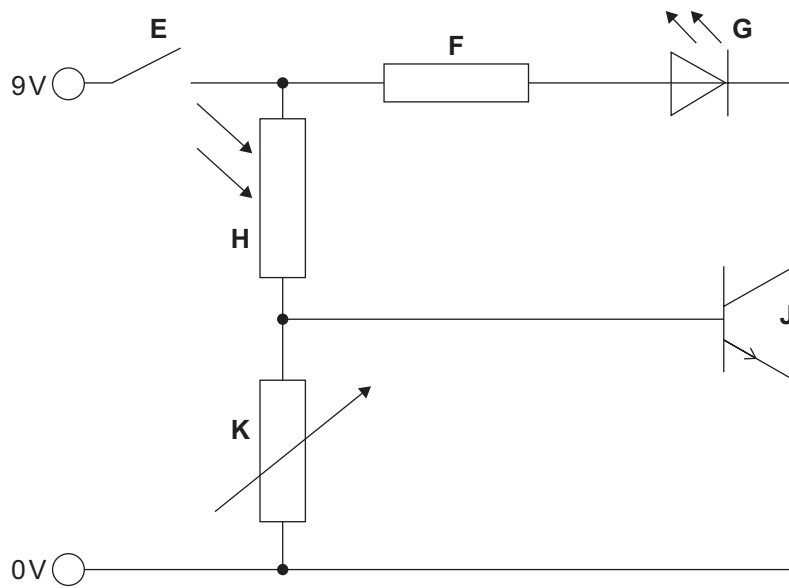
Candidates need to show their working out in the space below.

Answer _____ [4]

[Turn over



Fig.3 shows a circuit diagram which is to be used in a student project.



Source: CCEA

Fig. 3

(ii) Name the electronic component represented by the symbol labelled **K** in Fig. 3.

_____ [1]

(iii) Explain the purpose of component **F** in the circuit shown in Fig. 3.

_____ [2]

(iv) Explain how the value of component **K** can be adjusted and how this will affect the operation of the circuit shown in Fig. 3.

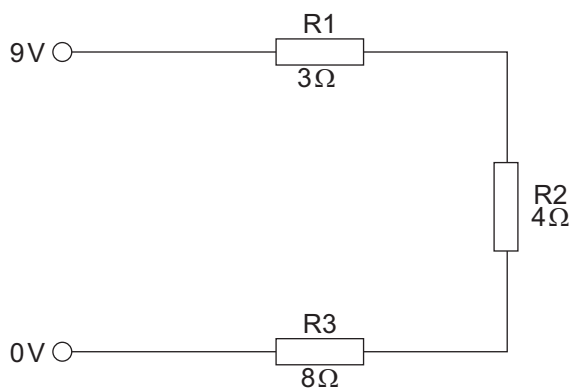
_____ [3]



(v) Name the electronic component represented by the symbol labelled **H** and explain its function in the circuit shown in **Fig. 3**.

[3]

(c) **Fig. 4** shows a circuit containing three fixed resistors.



Source: CCEA

Fig. 4

(i) Calculate the current flowing in the circuit shown in **Fig. 4**.

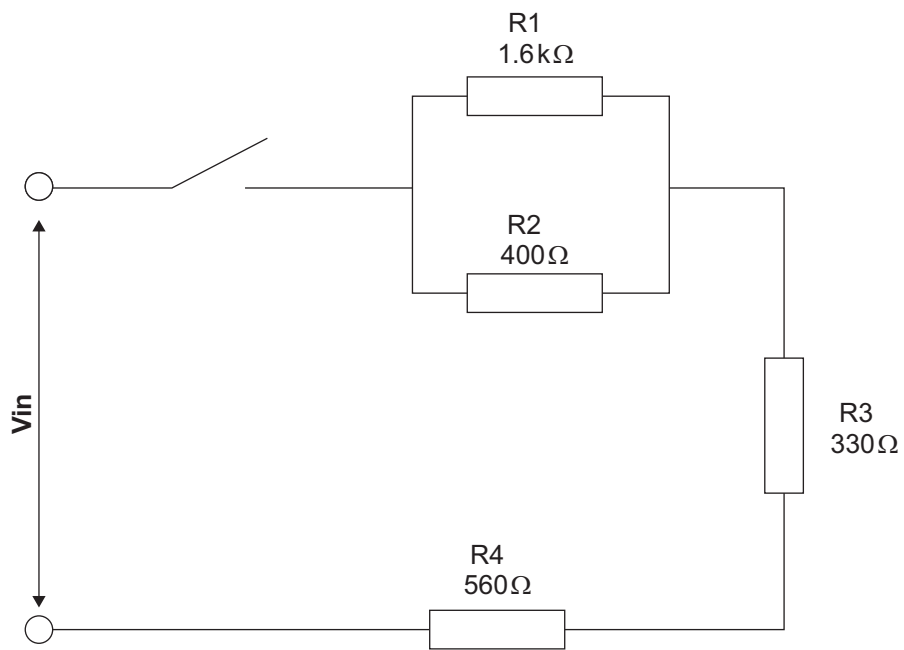
Candidates need to show their working out in the space below.

Answer _____ [4]

[Turn over



Fig. 5 shows a circuit containing resistors in series and in parallel.



Source: CCEA

Fig. 5

- (ii) Calculate the supply voltage for the circuit shown in **Fig. 5** given that the current from the supply is 8 mA.

Candidates need to show their working out in the space below.

Answer _____ [5]



(iii) Explain the term 'nearest preferred value' when using resistors in circuits.

[2]

(iv) State the method used to indicate the value of resistors and briefly explain the term tolerance when dealing with resistors.

[2]

(v) Calculate the highest and lowest values which could be expected from an E12 series resistor with a preferred value of $1.8\text{ k}\Omega$.

Candidates need to show their working out in the space below.

Highest value _____ [2]

Lowest value _____ [2]

[Turn over





[10]

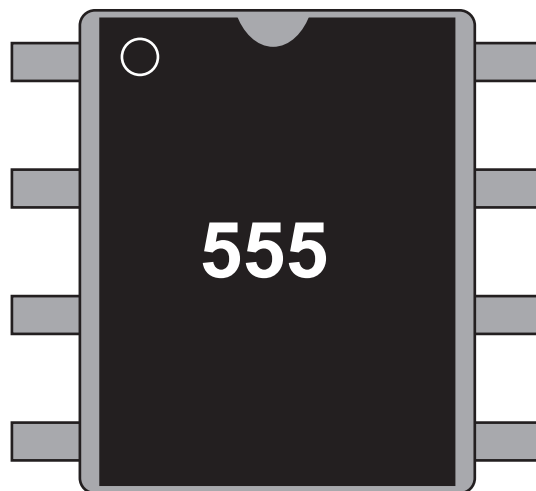
14800

[Turn over



20GTY2111

2 Fig. 6 shows a diagram of a 555 timer integrated circuit in a DIL package.



Source: CCEA

Fig. 6

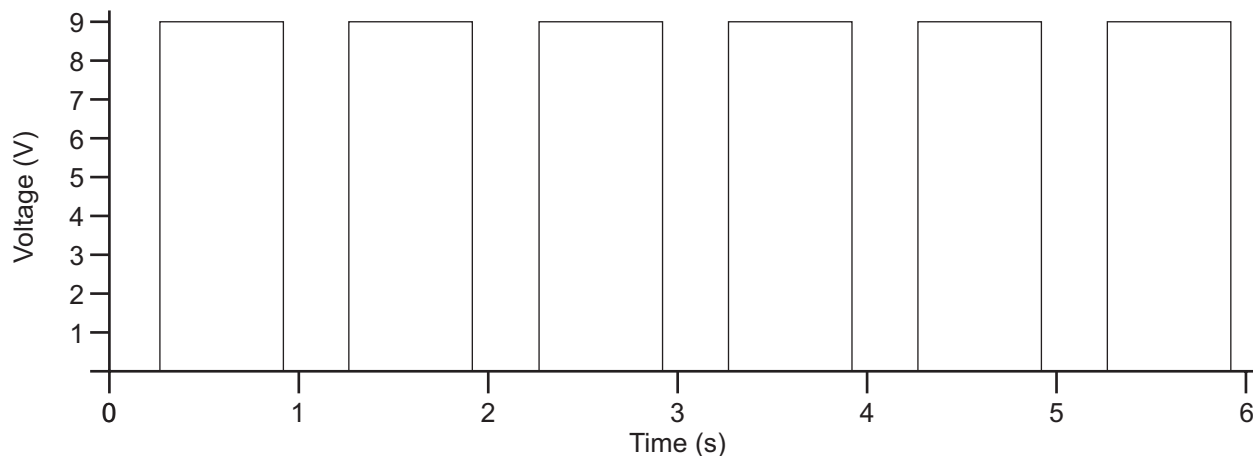
(a) (i) On Fig. 6, number the pins on the 555 timer using the numbers 1 – 8. [2]

(ii) What do the letters 'DIL' stand for in relation to an integrated circuit?

[1]



(b) Fig. 7 below shows the graph of a waveform produced by the output (pin 3) of a 555 timer circuit.



Source: CCEA

Fig. 7

- (i) State the type of 555 timer circuit that would produce the wave form shown in Fig. 7 and give a written explanation to justify your answer.

Type of 555 timer circuit _____ [1]

Explanation _____

_____ [2]

- (ii) Draw and label the time period of the waveform on the graph in Fig. 7. [1]



(c) Fig. 8 shows an incomplete 555 timer circuit.

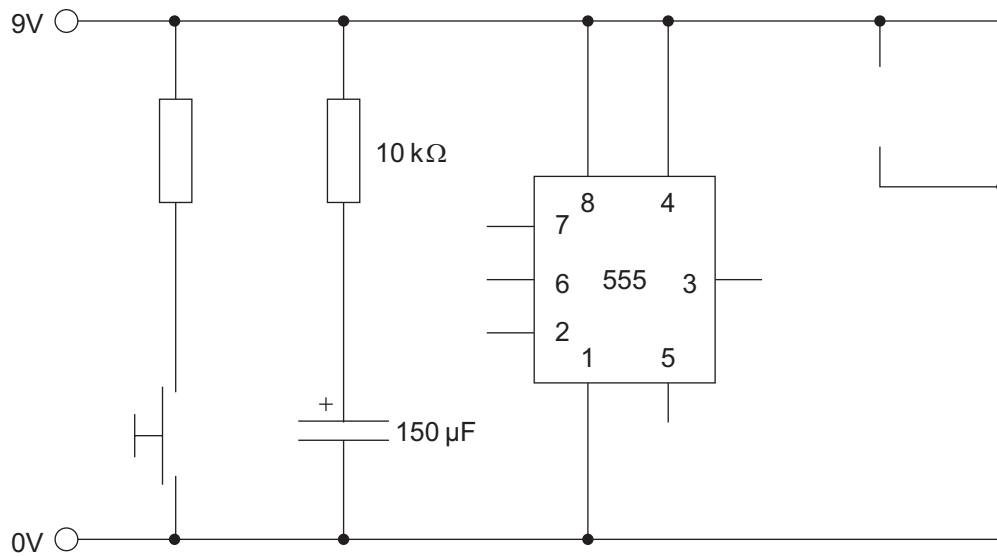


Fig. 8

Source: CCEA

- (i) Complete the circuit shown in Fig. 8 so that it produces a monostable output and uses the output to power a relay with a spring return contact. [8]
- (ii) Calculate the time period for the completed 555 monostable timer circuit.

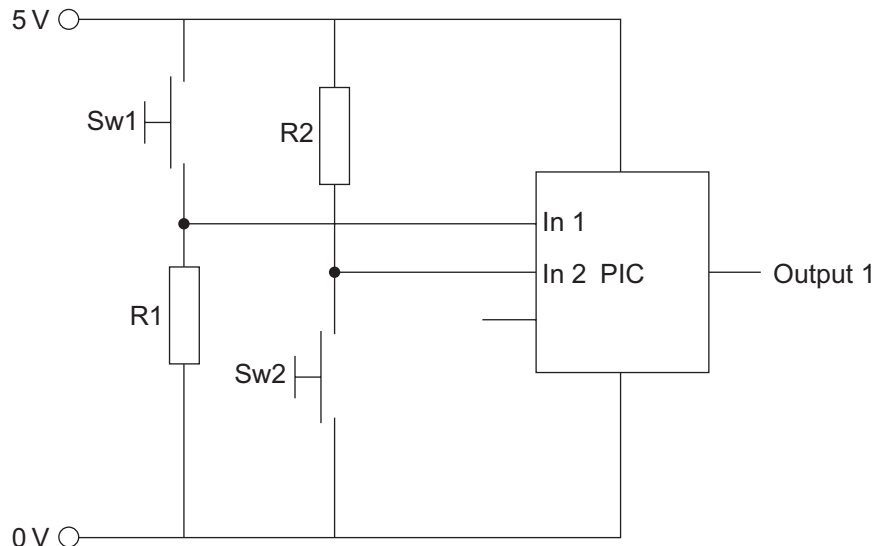
Candidates need to show their working out in the space below.

Answer _____ [3]



(d) Microcontrollers (PICs) are used in a range of projects in education and in industry.

A microcontroller (PIC) with two inputs and one output is shown in **Fig. 9**. It is to be used to control the operation of a mechanical press.



Source: CCEA

Fig. 9

Complete the flowchart in **Fig. 10** to produce a high output from the microcontroller (PIC) in **Fig. 9** when Input 1 is high and Input 2 is low.



Fig. 10

[5]

[Turn over



(e) A prototype of an automated lawnmower is shown in **Fig. 11**. The lawnmower is designed to follow a random pattern and to steer away from obstacles.

The lawnmower has a front bumper which operates a switch when a collision occurs and three motors to control the cutting blade and the independently driven rear wheels.

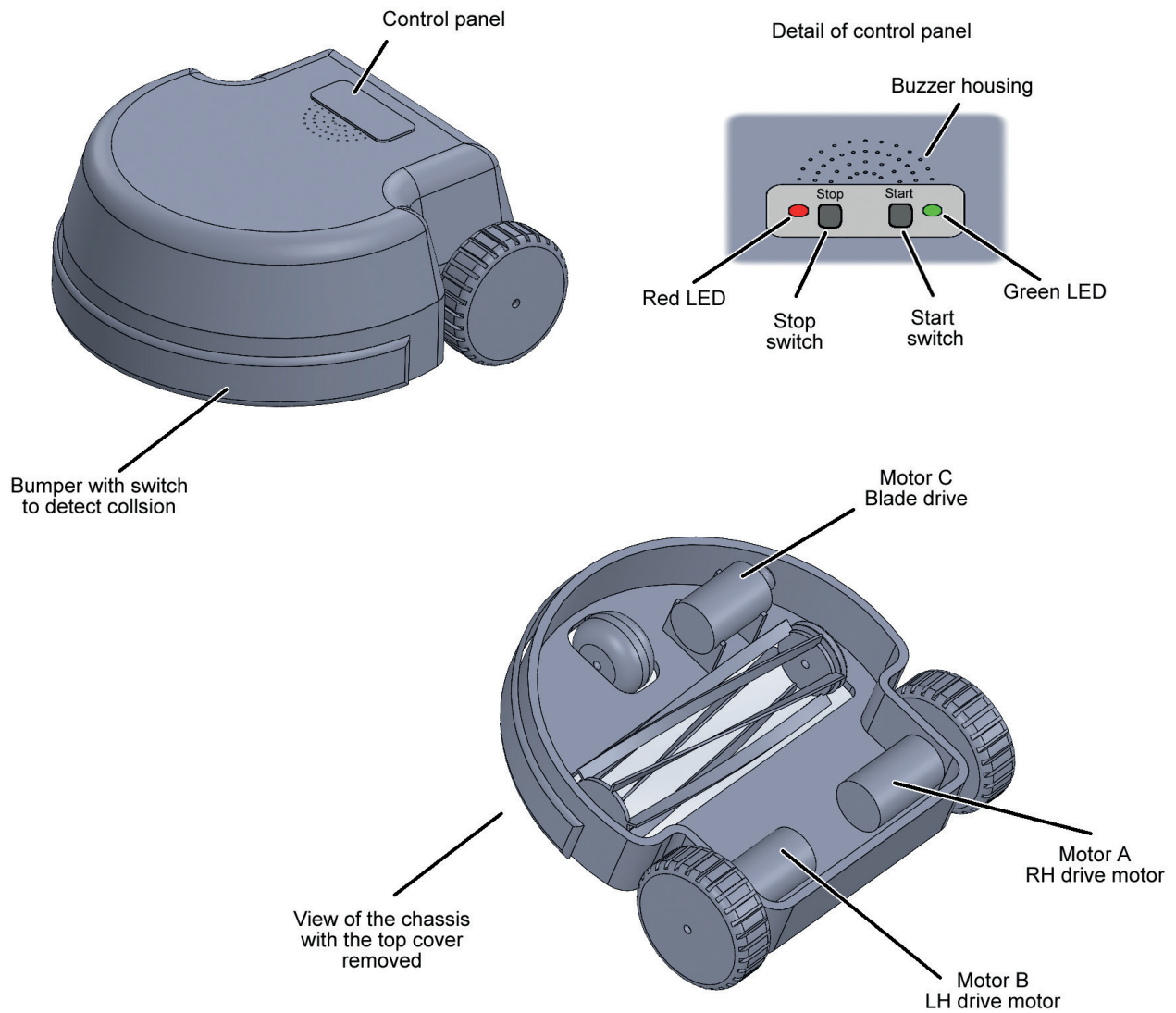


Fig. 11

Source: CCEA



(ii) Complete the macro flowchart **DRIVE** in **Fig. 13** as follows:

The macro will switch on the blade motor and switch on the drive motors. In the event of a signal from the bumper switch due to a collision, the flow chart will employ the macro **BUMPER** to steer away from obstacles.

DRIVE					

Fig. 13

[5]



(iii) Complete the flowchart **START** in **Fig. 14** as follows:

Initially the red standby LED is on. When the start switch is operated, the red standby LED switches off and the buzzer sounds for 5 seconds followed by the green LED switching on. The **DRIVE** macro is employed to cause the lawnmower to move forward in a straight line. The mower can be stopped by pressing the stop switch which will stop all motors. It will then switch off the green LED and return to standby.



Fig. 14

[12]



THIS IS THE END OF THE QUESTION PAPER

DO NOT WRITE ON THIS PAGE

For Examiner's use only	
Question Number	Marks
1	
2	
Total Marks	

Examiner Number

Permission to reproduce all copyright material has been applied for.
In some cases, efforts to contact copyright holders may have been unsuccessful and CCEA
will be happy to rectify any omissions of acknowledgement in future if notified.

GTY21/6
296497



20GTY2120